

STEMI Systems of Care Best Practices 2016 Improving Regional Care

Mike Valentine, MD, FACC
ACC Vice President
Centra Health
Stroobants Cardiovascular Center
Lynchburg, VA. USA



AMERICAN
COLLEGE of
CARDIOLOGY

Pearls

What can I do to improve STEMI care in my Country/Region?

- Develop a regional system
- 12 Lead ECG/All EMS- cell phone
- ED Bypass
- FMC 2 B



AMERICAN
COLLEGE of
CARDIOLOGY

ED Bypass

- With confirmed STEMI, Cath Lab ready
- Straight to Cath Lab, prep on table
- Save 10-30 minutes on D2B



AMERICAN
COLLEGE of
CARDIOLOGY

FMC 2B

- Begin at First Medical Contact
- Search for time savings in transport
- Communication to Cath Lab and EP



AMERICAN
COLLEGE of
CARDIOLOGY

12 Lead ECG/EMS

- 12 Lead ECG in EVERY EMS
- Transmit ECG to ED with cell phone
- Cath Lab activated by EMS



AMERICAN
COLLEGE of
CARDIOLOGY

Develop a Regional System

- Cardiology/ED Physician Champions
- Draw maps of all hospitals in the region
- Regular meetings-Establish relationships, referrals
- Share protocols, Best practice



AMERICAN
COLLEGE of
CARDIOLOGY

Core Principles for STEMI System Improvement

- *Patient centered, Guideline Drive care* (Prehospital 12 leads and immediate activation are Class I Indications!)
- *Goal Setting*
- *Hardwiring*
- *Ownership*
- *Accountability*



AMERICAN
COLLEGE of
CARDIOLOGY

VHAC Strategic Plan...The Three Pillars

- Sustainable Regional Activity
- EMS education, training and equipment
- State Data Collection and Reporting



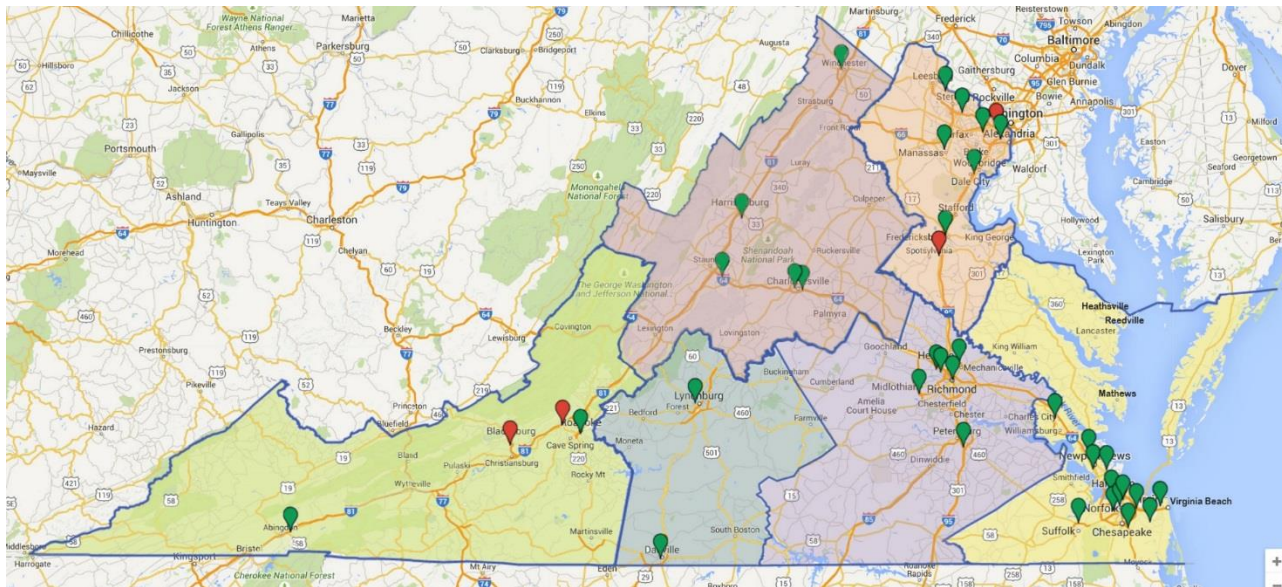
AMERICAN
COLLEGE of
CARDIOLOGY

Sustainable Regional Activity

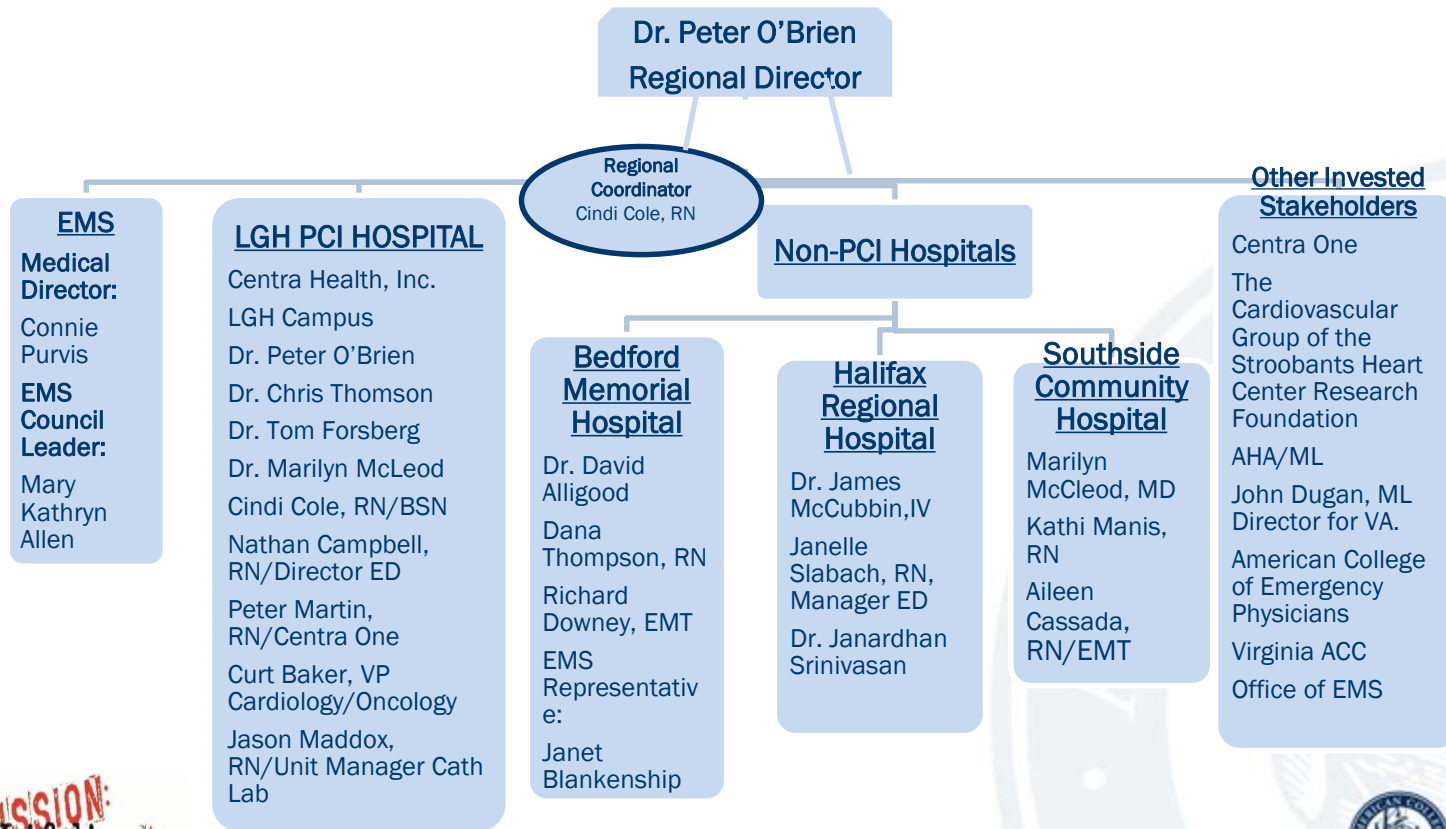
GOAL: Regional STEMI committees to meet quarterly. Committees are to have full representation of each profession/organization/hospital/health care system with agenda, meeting minutes and timelines.



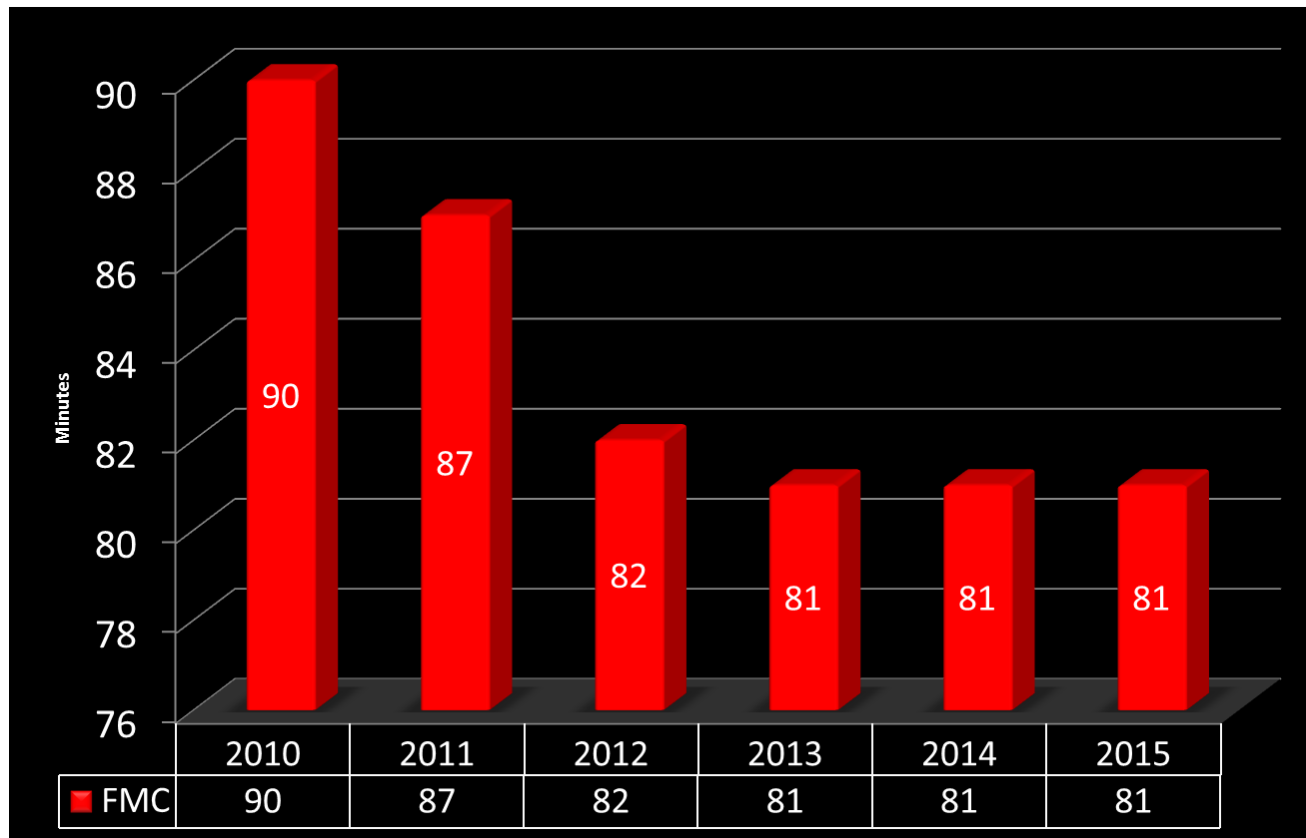
New STEMI Map!!



Southern Region Leadership Team



FMC to Balloon in Virginia



AMERICAN
COLLEGE of
CARDIOLOGY



***THANK
YOU
Virginia!!!***



AMERICAN
COLLEGE *of*
CARDIOLOGY